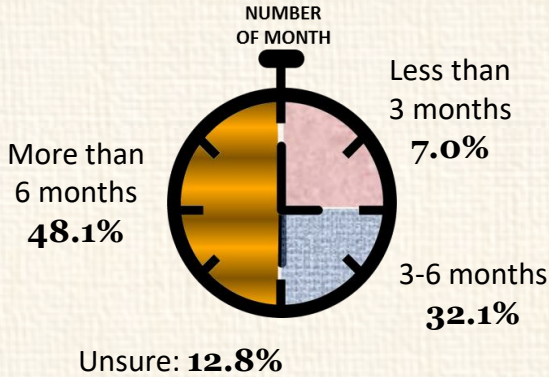




Quick-Take Survey: The Preparation of Post-Movement Control Order (MCO)'s Exit Strategy

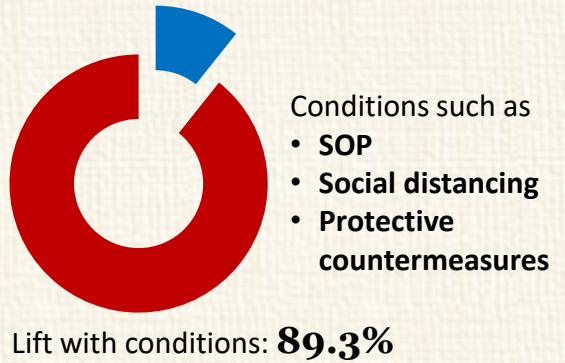
48.1% needs more than 6 months for a business recovery

How long does it take for a business recovery?

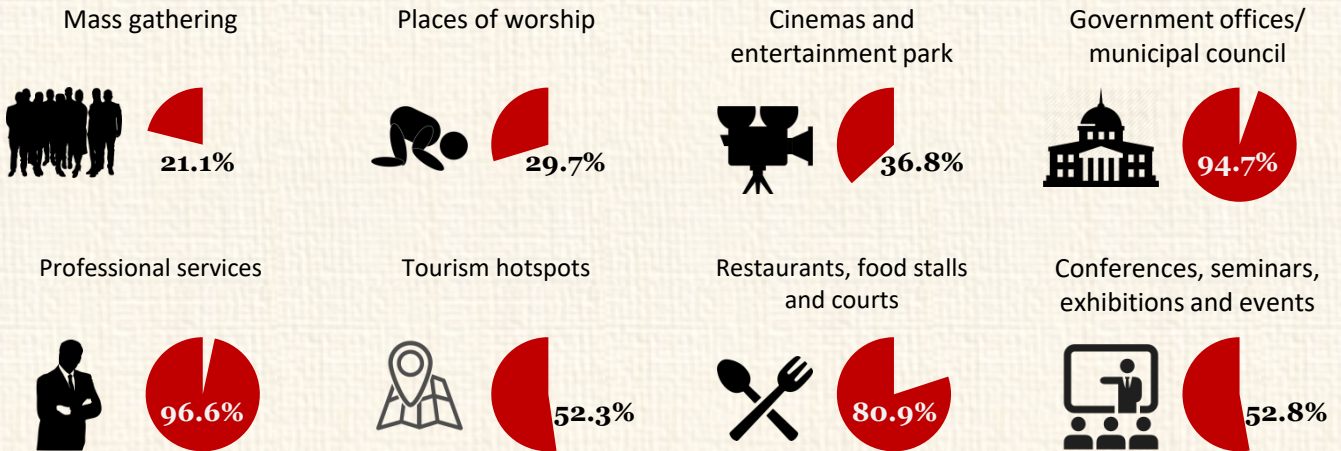


Most respondents agreed to lift MCO with conditions

Expectations of an exit strategy from MCO

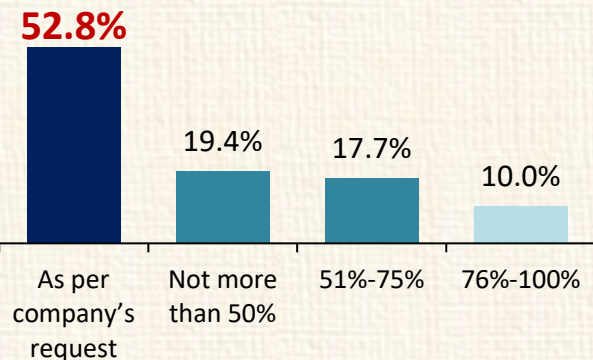


Respondents' view: Should the following activities be allowed with conditions?



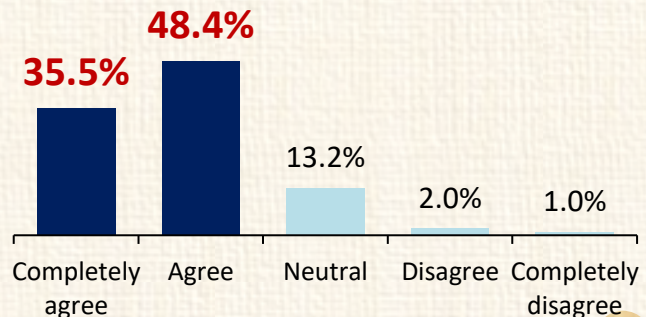
Businesses know best the number of workers required

Preferred level of workforce allowable post-MCO



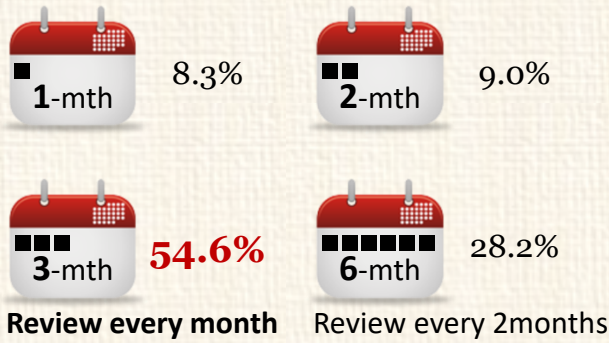
83.9% have agreed to have SOP for COVID-19

SOP on COVID-19 prevention is a must post-MCO?



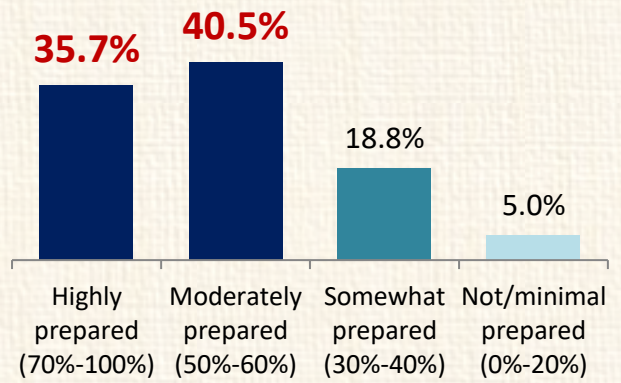
More than 50% indicated that the SOP to remain in place for 3 months

How long the SOP post-MCO should remain in place?



Most businesses are well prepared to comply with SOP

Level of preparedness to comply with SOP post-MCO



Items/measures that were in place to comply with SOP on COVID-19 prevention

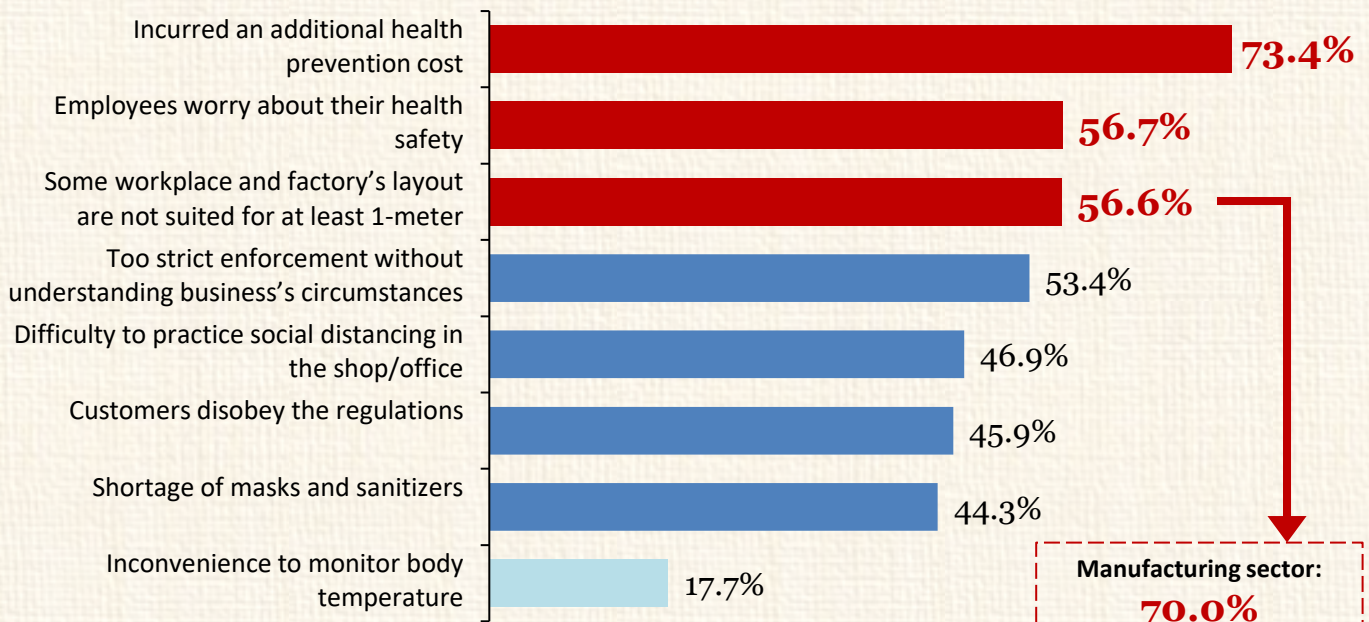
	Masks	Infrared forehead thermometer	Hand sanitizer	Factory or workplace zoning	1-meter distance for queuing	No touch policy	Business Continuity Plan
Overall	94.0%	73.5%	94.5%	30.9%	55.5%	47.7%	33.8%
Manufacturing	97.0%	90.3%	95.8%	56.5%	67.1%	46.8%	38.0%

SMEs generally have lower compliance, especially micro and small enterprises

Overall, only 1.4% (mainly are SMEs) were not prepared in terms of these items / measures

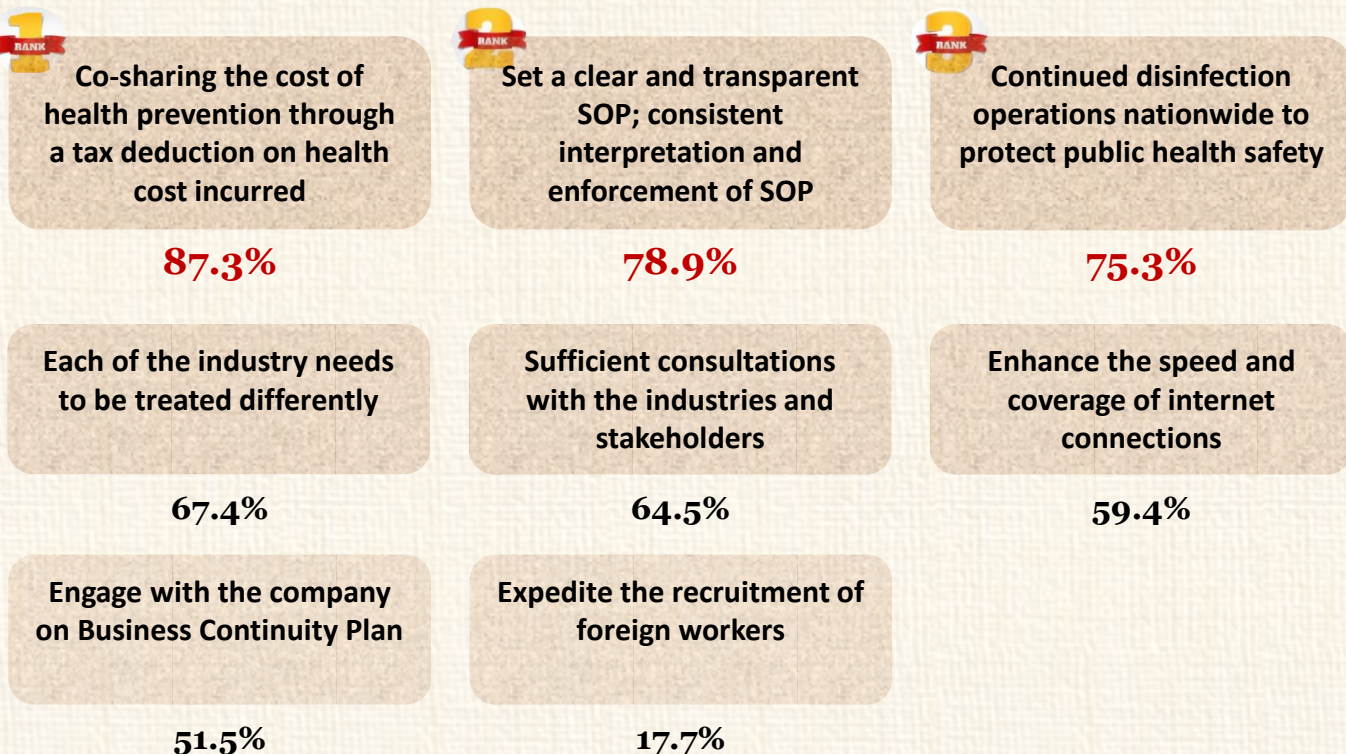
Manufacturing sector is generally having higher compliance

Challenges/issues foresee when complying with SOP on health prevention post -MCO



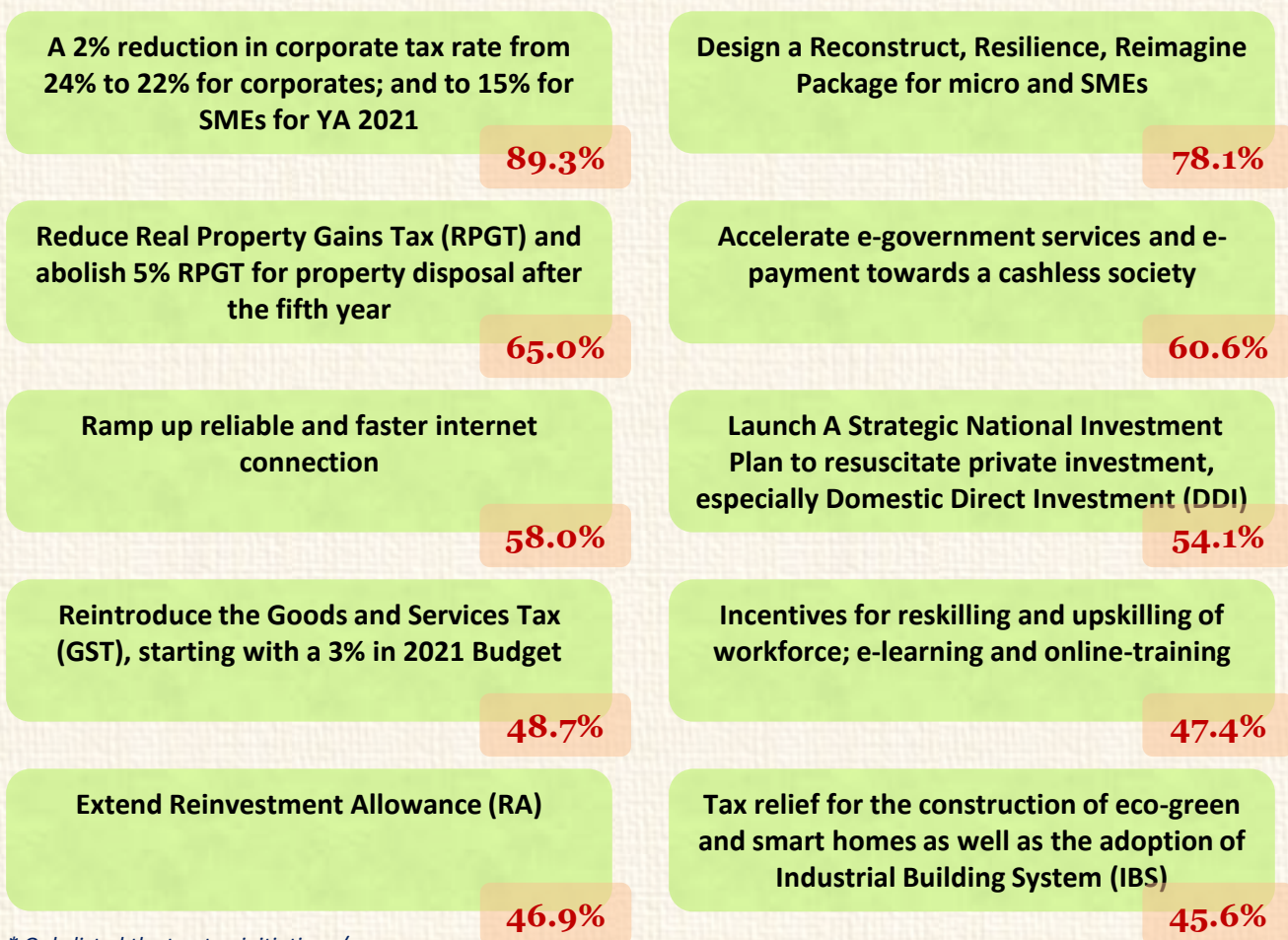
Post-MCO: Businesses' wish list

What does your company want from the Government to facilitate your business operations post-MCO?



Proposed medium- and long-term initiatives and measures for Government's consideration

What should the Government consider to implement in ensuring an economic revival and business sustainability?



* Only listed the top ten initiatives / measures

Total respondents

916



Survey period

13 April 2020 – 21 April 2020

From a wide range of industries and different sizes of enterprises

By sector / industry



Primary industry
(incl. agro & mining sectors)
3.3%



Manufacturing
25.9%



Construction
10.7%



Services
60.2%

Wholesale and retail trade
21.2%

Professional and business
services
17.0%

By business scale



Micro enterprise
16.9%



Small enterprise
50.5%



Medium enterprise
26.6%

SMEs constitute 94.1%



Large enterprise
5.9%



马来西亚中华总商会

THE ASSOCIATED CHINESE CHAMBERS OF COMMERCE AND INDUSTRY
OF MALAYSIA (ACCCIM)

6th Floor, Wisma Chinese Chamber, 258, Jalan Ampang,
50450 Kuala Lumpur, Malaysia.

Tel: 603-4260 3090 / 3091 / 3092 / 3093 / 3094 / 3095

Fax: 603-4260 3080

Email: accim@accim.org.my

Website: www.accim.org.my